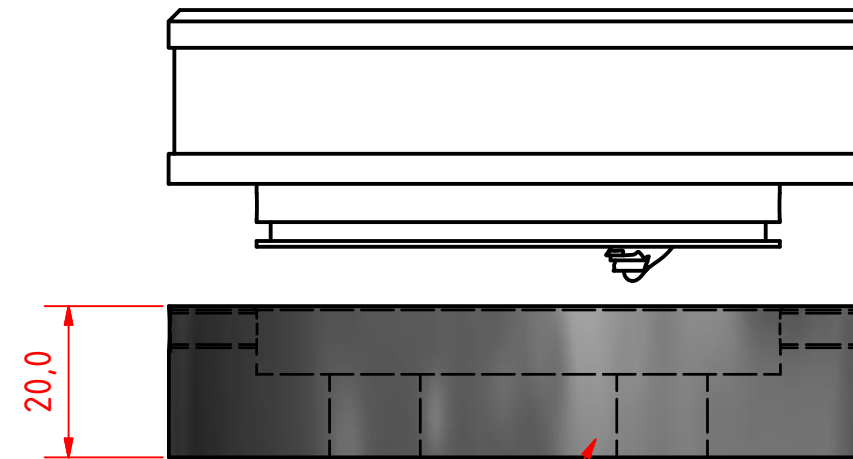
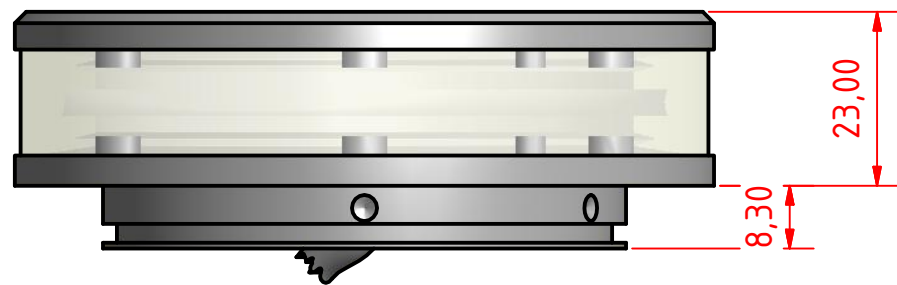


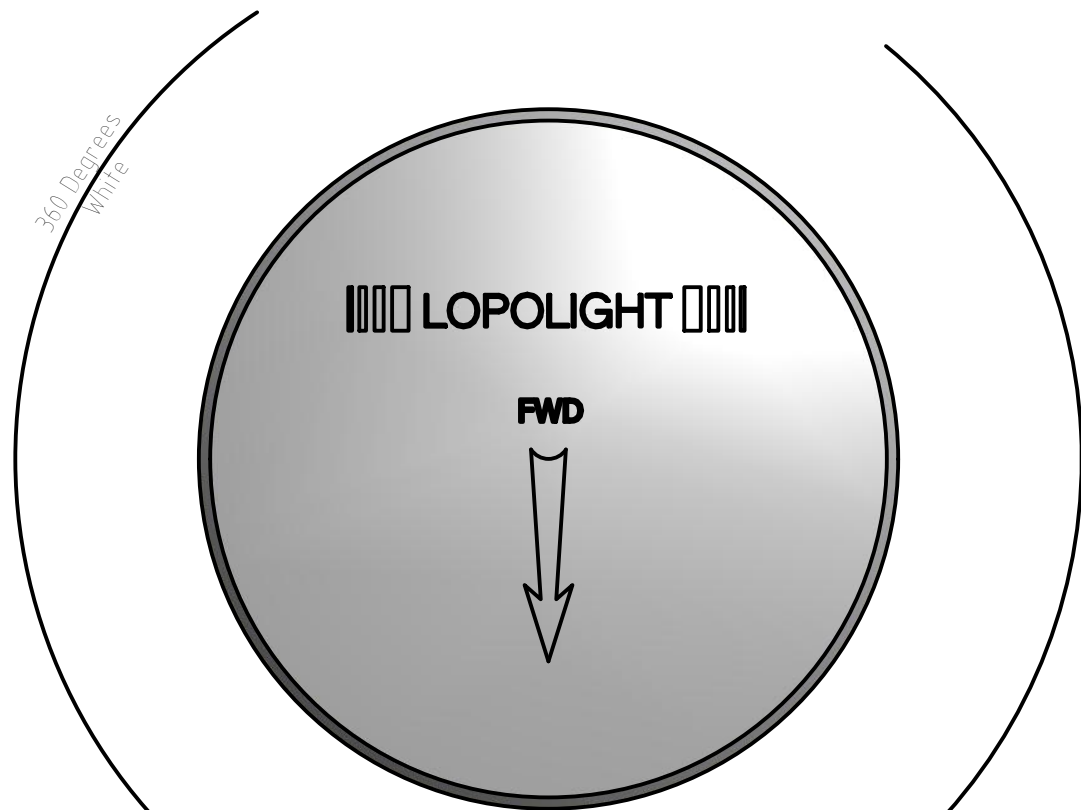
Note:
 200-012 and 200-012S can be mounted on the PE mounting base which accompanies it, as well as our PN 400-032 ProMount base.

Please take a look at drawing 200-012 Mounting for a clear visualisation of these two options.



PE PLastic Mounting Base Included

M5 Set Screw for Alignment & Securement Fore and Aft



Specification Drawing. Model No. 200-012, Anchor Light 50 Meter

DRAWING NO.: 200-012	REV. NO.:	SIZE: A3	DRAWN BY: Paul
SCALE:	TOLERANCES: DS/ISO 2768-f	REVIEWED BY: PHH	

MATERIAL DESCRIPTION:
Aluminium & PMMA

This Drawing, and the information within, is the property of Lopolight ApS and may not be used in any form without express permission there from. Lopolight reserves the right to change this drawing and assumes no liability for the information communicated herein. Use of dimensions and other information in this drawing is at the users own risk.



Lopolight ApS
 Ved Klaedebo 12
 DK-2970, Hoersholm
 Denmark

Tel:(+45) 32 48 50 30 Fax:(+45) 32 48 50 32
 info@lopolight.com

www.lopolight.com